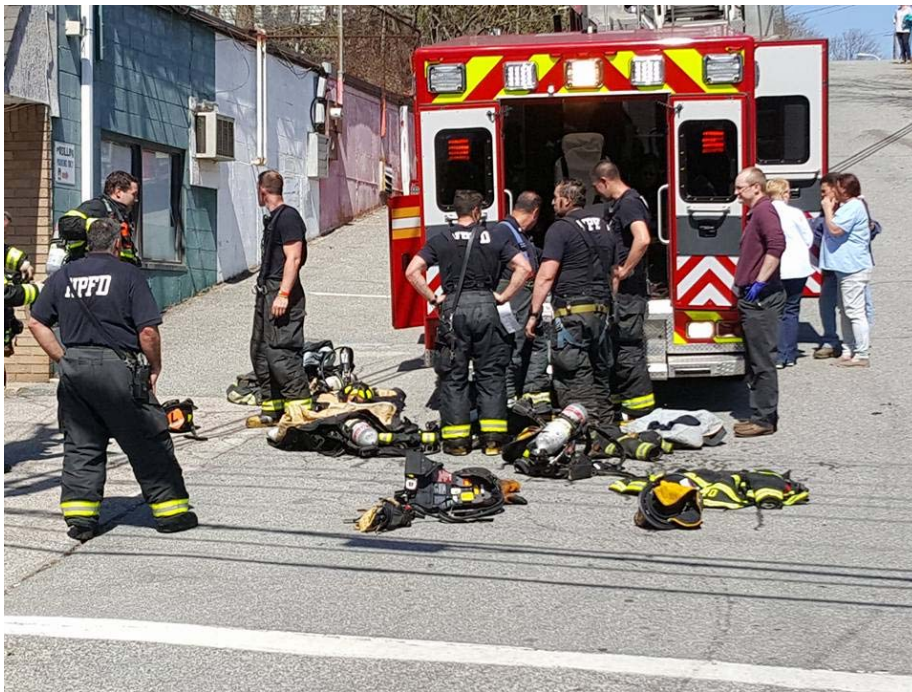


NORTH PROVIDENCE FIRE DEPT

2017



ANNUAL RUN REPORT

Prepared by: Ralph Nahigian
Director of Communications

RUNS PER COMPANY								
UNIT	2010	2011	2012	2013	2014	2015	2016	2017
Rescue 1	2673	2670	2787	2761	2794	2984	3041	3136
Rescue 2	2315	2409	2457	2322	2335	2452	2368	2465
Rescue 3	2	9	48	41	28	64	20	13
Engine 1	2454	2439	2485	2509	2535	2715	2569	2761
Engine 2	1449	1345	1462	1422	1423	1497	1592	1685
Engine 3	0	0	1258	1227	1191	1240	1281	1414
Engine 4	1582	1472	1	1	0	0	0	2
Engine 5	12	23	5	0	1	0	0	0
Ladder 1	1225	1091	1178	1253	1220	1347	1317	1574
Squad 1	983	763	715	1341	1318	1465	1250	1497
Battl 1	768	661	715	778	804	848	887	1033
Battl 2	1	1	0	3	2	1	4	8
Decon 1	63	8	1	16	2	2	0	1
Decon 2	3	0	0	2	0	0	0	1
Marine 1	5	1	0	2	2	5	0	1
SRU 1								2

DEPARTMENT TOTALS									
2009	2010	2011	2012	2013	2014	2015	2016	2017	
6435	7151*	6942	6950	6853	6924	7428	7307	7534	
*Historic flooding in April 2010									

MUTUAL AID GIVEN BY NORTH PROVIDENCE

	JOHN				LINC				PROV				PAWT				CNRL FLS				SMITH			
	14	15	16	17	14	15	16	17	14	15	16	17	14	15	16	17	14	15	16	17	14	15	16	17
RESCUE 1	44	50	56	68	6	8	7	10	87	91	100	74	14	12	15	9	2	1	4	0	41	43	41	55
RESCUE 2	13	11	9	18	34	33	50	49	116	111	128	104	83	52	53	80	12	6	11	8	11	13	14	25
RESCUE 3	0	1	0	0	0	1	0	0	0	3	2	0	0	0	0	0	0	0	0	0	0	0	0	0
ENGINES	13	12	1	6	1	4	4	8	4	17	23	9	20	19	22	25	5	2	0	3	29	37	31	28
LADDERS	0	2	1	4	0	0	0	2	1	8	7	5	1	0	1	0	3	10	8	6	52	68	61	57
CHIEFS	1	1	1	1	0	0	1	5	0	0	1	0	0	0	3	0	1	3	1	1	4	2	11	14
DECON	1	1	0	0	0	0	0	1	0	0	0	0	0	0	1	0	0	0	0	0	0	0	0	0
EMS	57	62	65	86	40	42	5	59	203	205	230	178	97	64	68	89	14	7	15	8	51	56	55	80
FIRE	15	18	3	11	1	4	5	16	6	25	31	14	21	19	27	25	9	15	9	10	85	107	103	99

M/A to other	2013	2014	2015	2016	2017
Woonsocket		2-F		2-D, 1-F	1-D, 1-F, 1-R
Scituate		1-F	1-F		
East Prov	4-F		1-F	1-R	
Cranston			1-E	1-R	1-R
North Smith				1-D	
CUMBERLAND					1-D

	2010	2011	2012	2013	2014	2015	2016	2017
Mutual Aid given Rescue	619	773	622	489	462	436	440	502
Mutual Aid given Fire	62	43	64	133	137	188	160	178
Mutual Aid given TOTAL	681	816	686	622	599	624	600	680

MUTUAL AID GIVEN TO NORTH PROVIDENCE

	11	12	13	14	15	16	17
Lincoln Engine	2	1	2	2	2	4	2
Lincoln Ladder	0	0	0	0	0	0	0
Lincoln Rescue	54	59	57	63	75	60	68
TOTAL	56	60	59	65	77	60	70

	11	12	13	14	15	16	17
Smithfield Engine	7	5	4	3	2	7	3
Smithfield Ladder	0	0	0	0	0	0	1
Smithfield Rescue	185	171	131	170	163	164	200
TOTAL	192	176	135	173	165	167	204

	11	12	13	14	15	16	17
Johnston Engine	8	15	12	5	5	3	7
Johnston Ladder	1	2	0	1	1	1	0
Johnston Rescue	61	67	47	23	33	24	36
TOTAL	70	84	59	29	39	29	43

	11	12	13	14	15	16	17
Prov Engine	32	29	20	18	8	22	22
Prov Ladder	75	24	24	16	9	18	21
Prov Rescue	51	71	43	48	55	51	88
TOTAL	158	124	87	82	72	91	131

	11	12	13	14	15	16	17
Pawtucket Engine	7	5	5	4	5	6	6
Pawtucket Ladder	2	0	2	0	0	0	0
Pawtucket Rescue	25	24	13	16	17	15	37
TOTAL	34	29	20	20	22	21	43

	11	12	13	14	15	16	17
Cranston Rescue	0	0	0	1	1	0	0
Cranston Fire	0	0	2	0	0	0	0
Glocester Rescue	0	0	2	0	0	1	0
N Smith Fire							1
Scituate Rescue							1
TOTAL	0	0	4	1	1	1	2

	2010	2011	2012	2013	2014	2015	2016	2017
Mutual Aid Recv Rescue	301	376	392	293	321	344	315	430
Mutual Aid Recv Fire	99	135	81	71	49	32	61	63
Mutual Aid Recv TOTAL	400	511	473	364	370	376	376	493

PATIENT AGE DEMOGRAPHIC				
	2014 (May-Dec)	2015	2016	2017
Elderly 65+		1898	1913	1979
Senior 50-64	46.4%	981	1044	997
Adult 22-49	40.2%	1162	1240	1196
Young Adult 18-21	3.1%	166	202	125
Adolescent 12-17	3.9%	183	186	248
Child 6-11	2.4%	53	54	73
Toddler 1-3		61	58	49
Pre-School 4-5		21	20	17
Infant	1.1%	0	0	2
Unknown	2.9%	234	315	0

EMS RUNS BUSIEST DAY OF THE WEEK				
	2014 (May-Dec)	2015	2016	2017
Sunday	360	677	633	644
Monday	438	721	761	739
Tuesday	362	683	746	746
Wednesday	390	707	724	690
Thursday	401	711	721	665
Friday	344	652	719	729
Saturday	394	608	730	703